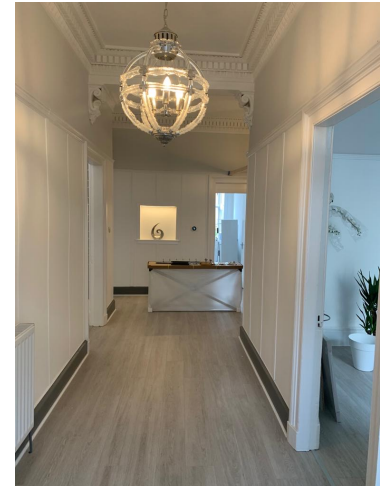


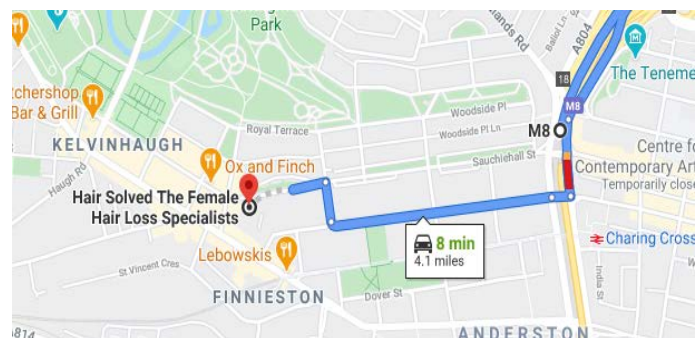
Hair Solved Glasgow
 21 Westminster Terrace
 Glasgow
 G3 7RU

Please call us on 0141 248 7428 if you require any further assistance finding us, or with your travel plans and we will be happy to help.



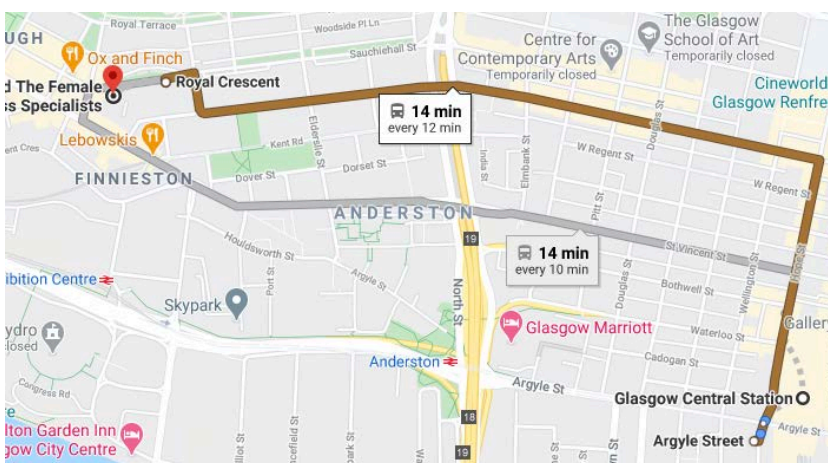
Directions by car

- > Continue on M8 to Newton St/A804. Take exit 18 from M8
 2 min (1.2 mi)
- > Take Berkeley St to Fitzroy Pl/Sauchiehall St/Westminster Terrace in Finnieston
 3 min (0.6 mi)



Hair Solved The Female Hair Loss Specialists
 21 Westminster Terrace, Finnieston, Glasgow G3 7RU

From Glasgow Central Station




 3 simpliCITY

8:38 AM from Argyle Street
 1 min every 12 min

 [ADD TO CALENDAR](#)

 [SCHEDULE EXPLORER](#)

8:37 AM  **Glasgow Central Station**
 Gordon St, Glasgow G1 3SL

 Walk
 About 1 min, 161 ft

8:38 AM  **Argyle Street**

 3 simpliCITY Drumchapel
 13 min (8 stops) - Stop ID: 45298736

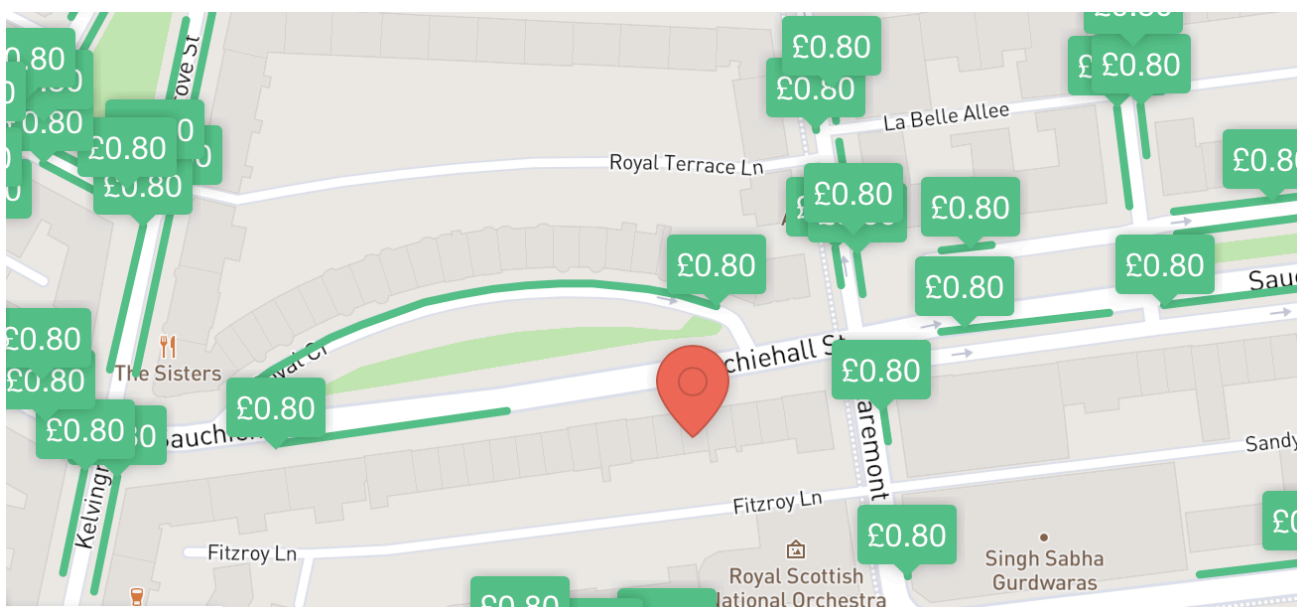
8:51 AM  **Royal Crescent**

8:51 AM  **Hair Solved The Female Hair Loss Specialists**
 21 Westminster Terrace, Finnieston, Glasgow G3 7RU

STREET PARKING

Please use the map as a guide only and ensure you check markings and regulations. Charges may apply

15 Royal Crescent	29 spaces
£0.80 1 hour	1 min to destination
Claremont Street	3 spaces
£0.80 1 hour	2 min to destination
Berkeley Street	3 spaces
£0.80 1 hour	2 min to destination
North Claremont Street	2 spaces
£0.80 1 hour	2 min to destination



Bus numbers 77 and 3 operate from the city centre and stop directly outside the salon. For information and timetables.

If you are journeying to us by train, the following train stations are all within walking distance or have local bus links:

Exhibition Centre Train Station – Bus Numbers X19, X4 and 1C

Anderston Train Station – Bus Numbers 2, 3, 77 and 17

Charing Cross Train Station – Bus Numbers 2, 3, 77 and 17

For further bus information and timetables, visit www.firstgroup.com